



TARGETED  
**RADIOFREQUENCY**  
THERAPY





[sales@btlnet.com](mailto:sales@btlnet.com)  
[www.btlnet.com](http://www.btlnet.com)

All rights reserved. Although every care has been taken to provide accurate and up-to-date information, no responsibility can be accepted for any mistakes or misprints contained in this catalogue. The products and their specifications, as shown in this catalogue, may differ according to the country where they are sold.

# TARGETED RADIOFREQUENCY THERAPY HEALING ENERGY TRANSFER

The BTL-6000 TR-Therapy (Targeted Radiofrequency Therapy) distributes high-frequency electromagnetic energy into the desired tissue which leads to selective tissue hyperthermy. Thanks to this mechanism patients experience instant pain relief, muscle relaxation, edema reduction, tissue regeneration support and healing.

The most common indications include: local muscle spasm, trigger points, myalgia, tendonitis, cervical pain, and post-traumatic edema. The immediate therapeutic effect is noticed by the patient instantly and lasts long after the therapy. Combination of the therapist's manual skills and the BTL-6000 TR-Therapy makes this therapeutic concept the most modern therapy for on-the-spot results.

In 2014, the BTL-6000 was granted the Red Dot Design Award, one of the most respected product design awards worldwide, for its superior functionality, level of innovation, formal design quality and technological expertise. The BTL-6000 TR-Therapy design incorporates these high standards and qualities.

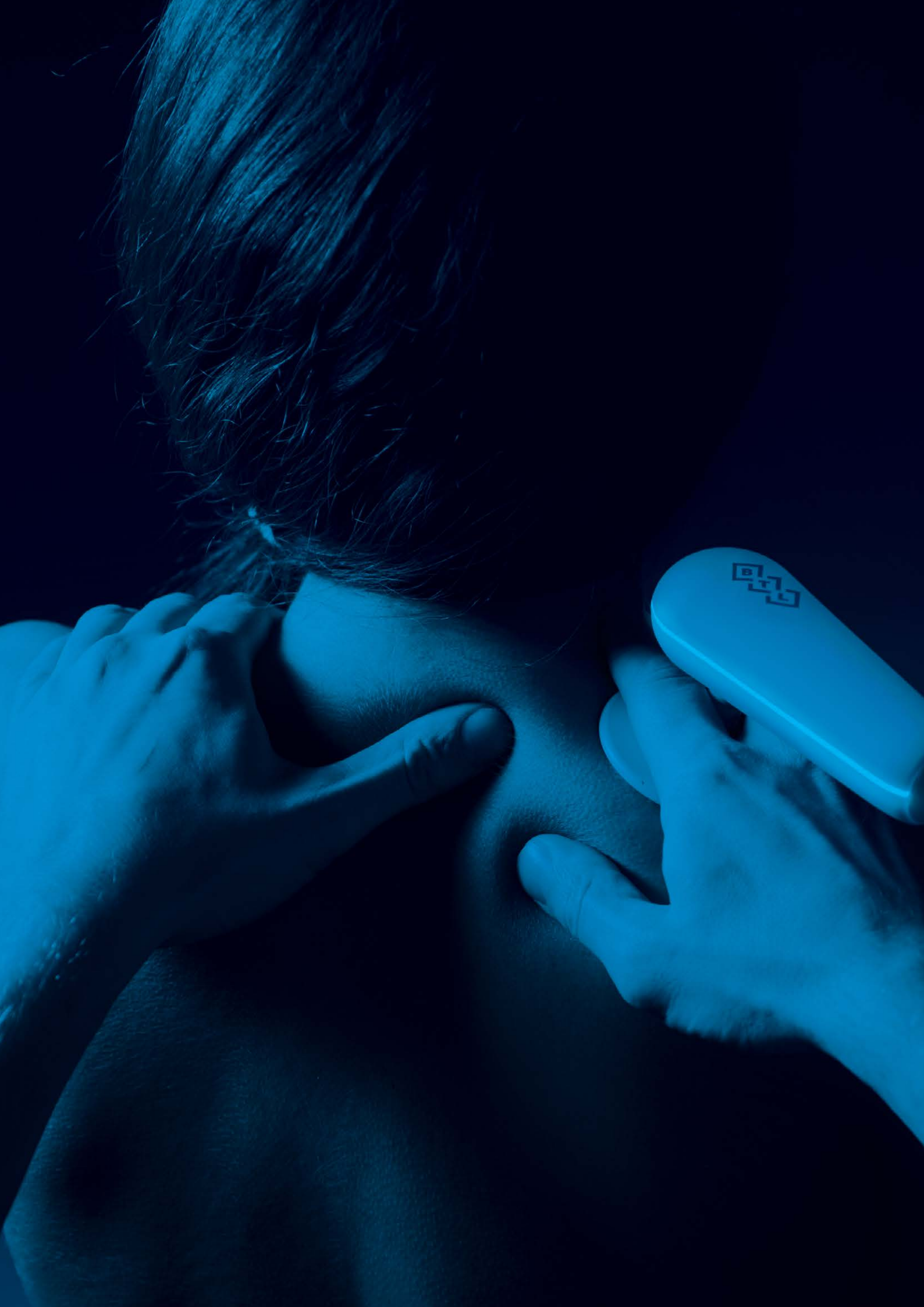


**reddot** award 2014  
winner

## CONTENT

---

<b>Introduction</b>	1
<b>Mechanism of action</b>	4
<b>Medical effects</b>	5
<b>Main features</b>	6
<b>Most common indications</b>	7
<b>BTL-6000 TR-Therapy</b>	10
BTL-6000 TR-Therapy Elite	10
BTL-6000 TR-Therapy Pro	11
<b>Superior applicator technology</b>	12
<b>Step-by-step therapy</b>	16
<b>Most common applications</b>	17
<b>TR-Therapy concept</b>	18
<b>Technical parameters</b>	20



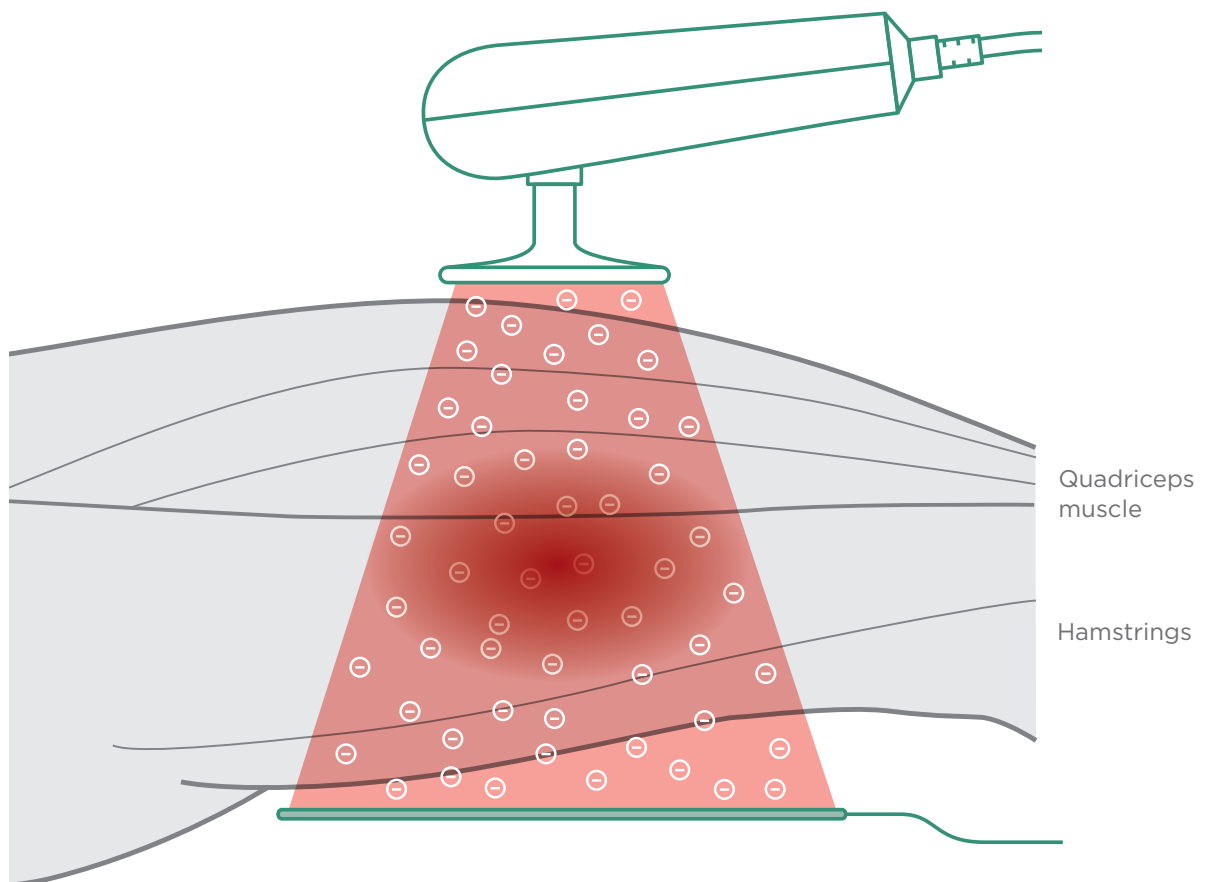
# NEW ERA IN TISSUE HYPER THERMY



# TARGETED RADIOFREQUENCY THERAPY

## MECHANISM OF ACTION

The BTL-6000 Targeted Radiofrequency Therapy transfers high frequency electromagnetic energy through the tissues of the body creating selective tissue hyperthermy. It has been scientifically proven to bring therapeutic effects such as immediate and intense pain relief, muscle relaxation, edema reduction and supporting tissue regeneration and healing.



# MEDICAL EFFECTS

## MUSCLE RELAXATION

The precise and aimed effect of the Targeted Radiofrequency Therapy on the hypertonic muscle fibers causes their immediate relaxation. The effect of myorelaxation is primarily based on vasodilation, which occurs immediately during the therapy and is responsible for higher supply of nutrients into the tissue.

## TISSUE REGENERATION AND HEALING

The improvement of tissue metabolism is a natural and valuable secondary outcome of the therapy. It leads to faster healing of the traumatized soft tissue and faster resorption of post-injury haematomas.

## EDEMA REDUCTION

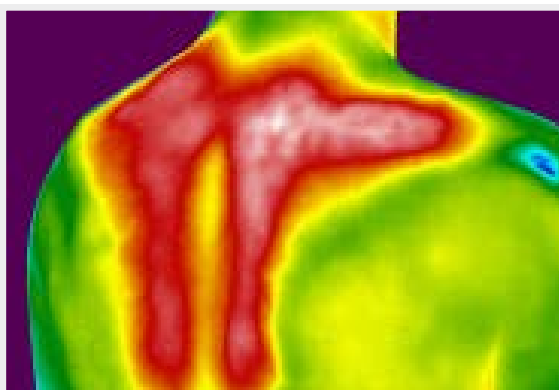
The walls of the arterioles are enlarged and the precapillary sphincters relaxed, allowing increased local blood perfusion. This leads to an increase of the lymphatic processes (drainage) and subsequently to reduction of the edema.

## PAIN RELIEF

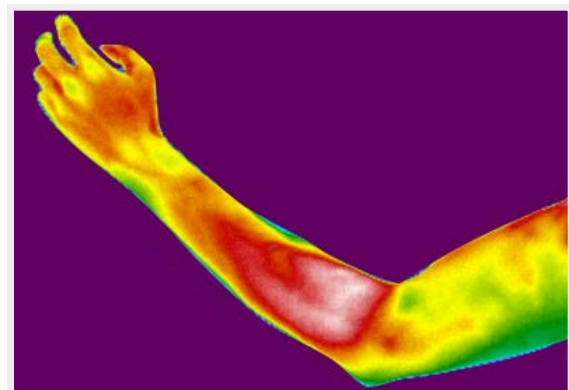
The principal effect of the Targeted Radiofrequency Therapy—the pain relief—results from muscle relaxation, edema reduction, tissue regeneration and healing.

# THERMAL PROFILE

Local hyperthermy of the treated area is shown in thermal images taken by an infrared camera immediately after the therapy. It is caused by vasodilation, one of the effects of the therapy.



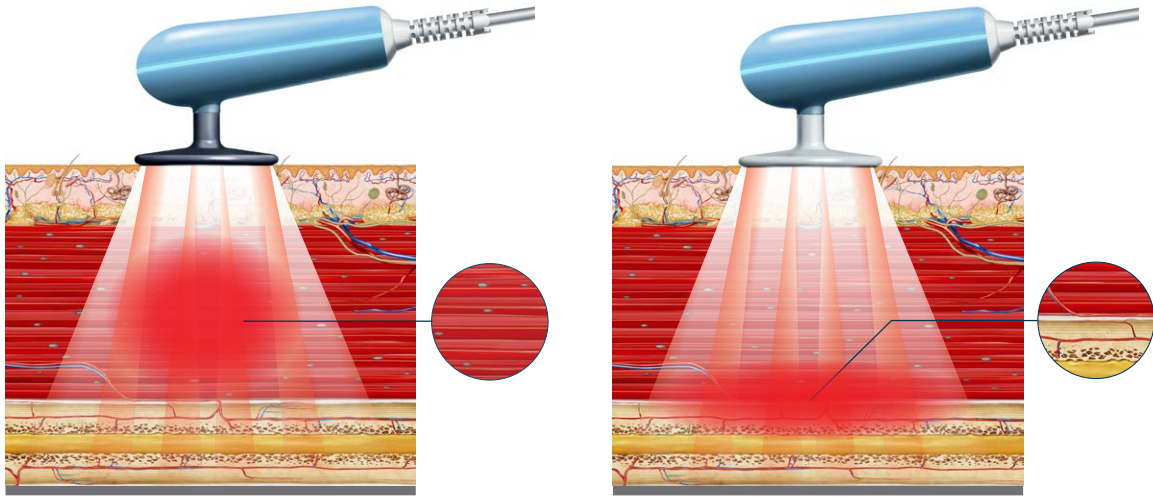
**CERVICOTHORACIC PAIN**



**EPICONDYLITIS**

# EXCEPTIONAL TISSUE SELECTIVITY

Two different electrodes (capacitive and resistive) of the Targeted Radiofrequency Therapy provide precise and effective treatment at any tissue level. The capacitive electrode focuses the therapy into muscle layers. The resistive electrode targets tissue with higher impedance such as muscular insertions, tendons and bone surfaces.

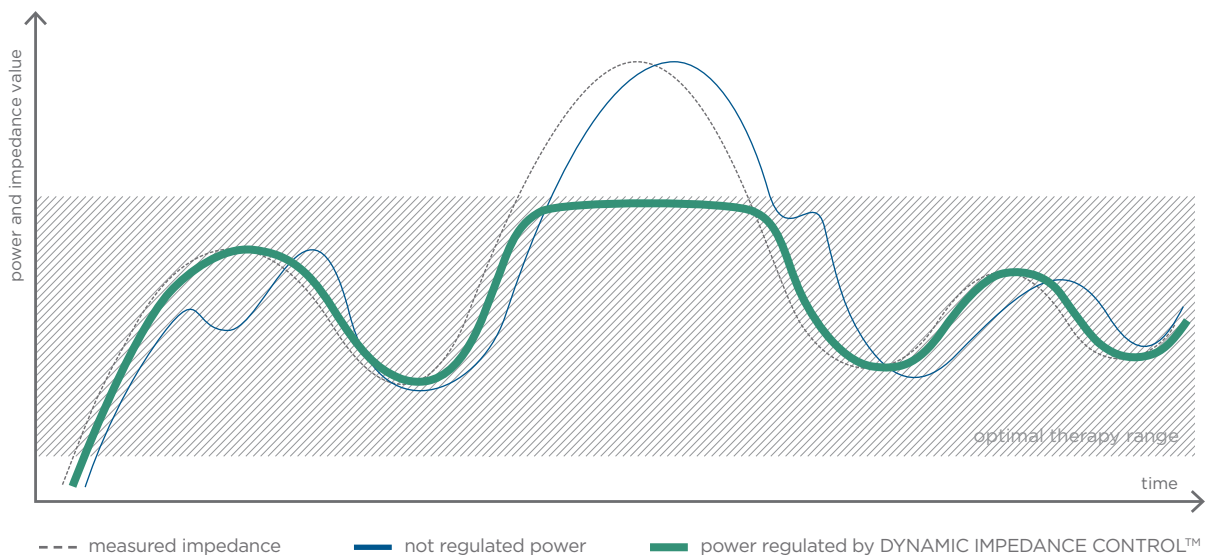


CAPACITIVE MODE

RESISTIVE MODE

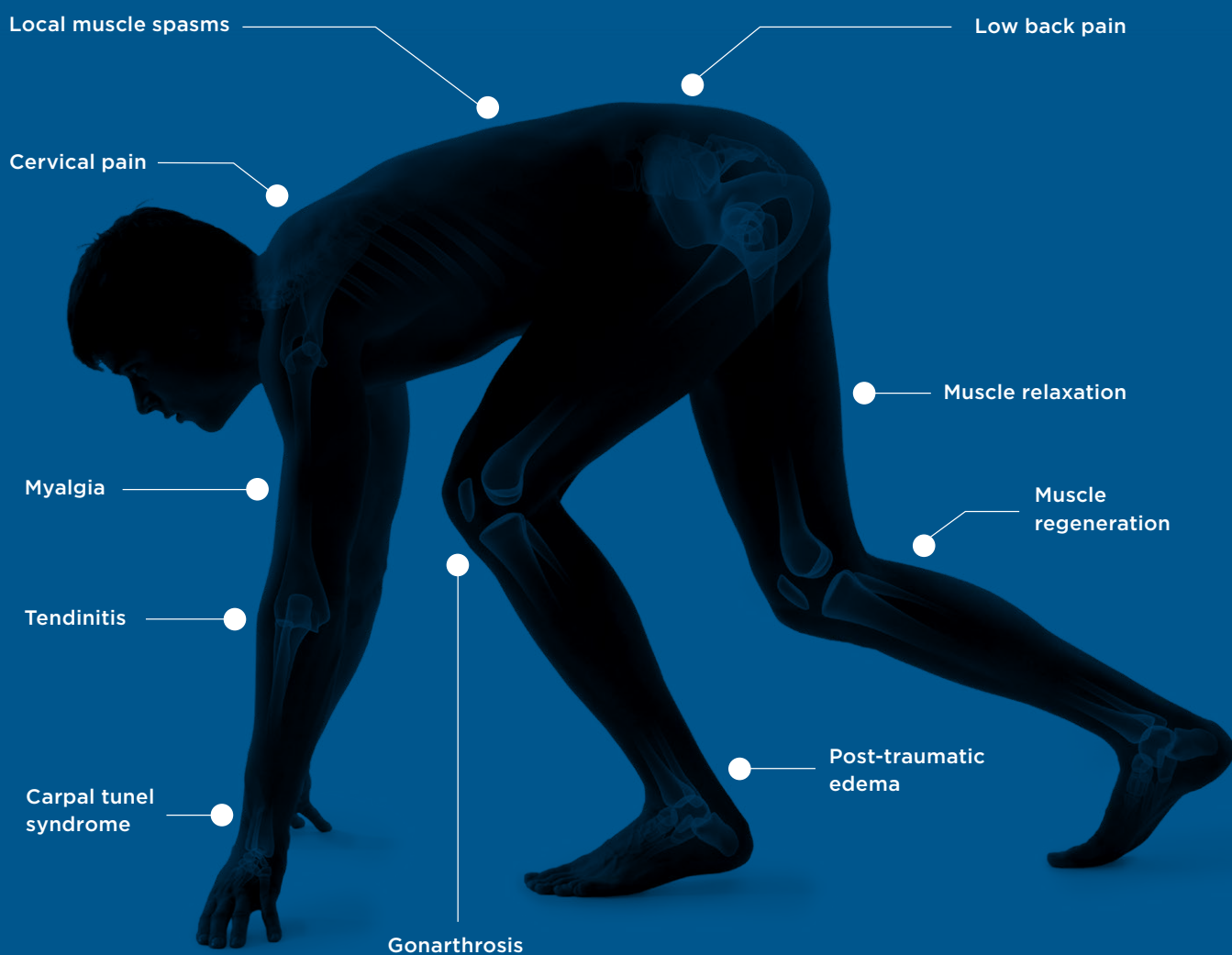
# DYNAMIC IMPEDANCE CONTROL™

Dynamic Impedance Control™ automatically regulates power throughout the Targeted Radiofrequency Therapy. The impedance of the tissue is measured during the whole therapy. The power is modulated to fit the exact characteristics and conditions of the treated tissue. Since the peak values are regulated at the same time, the tissue is evenly heated regardless of its immediate impedance.



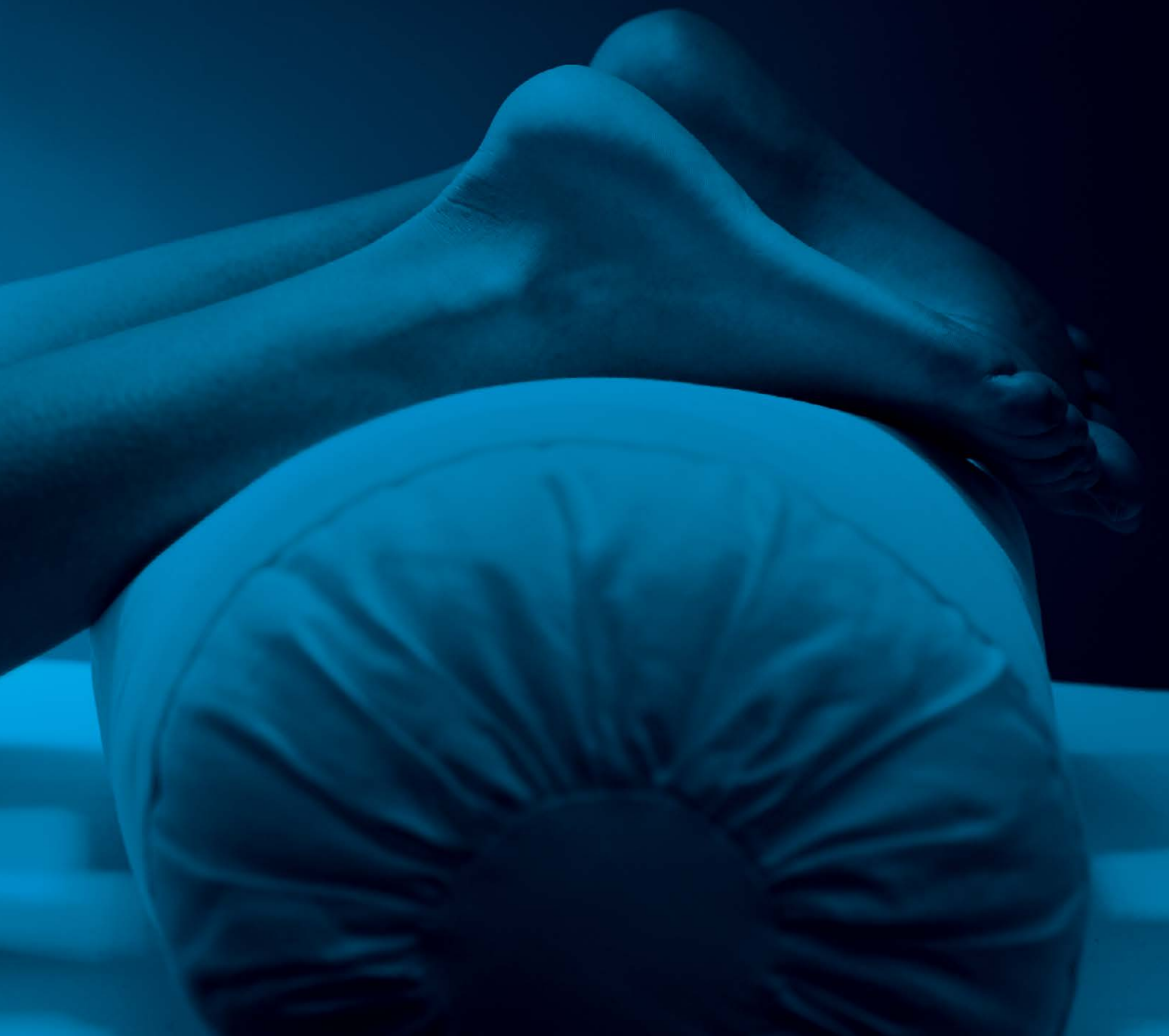


# MOST COMMON INDICATIONS





MAXIMUM  
**SAFETY,**  
PERFECTED  
**ERGONOMY**



# BTL-6000

## TR-THERAPY ELITE

### BTL-6000 TR-THERAPY ELITE

---

- 320 W power
  - 8.4" colour touch screen
- 

### FEATURES & BENEFITS

---

- QUICK protocols
  - Body Parts navigation
  - Patient database
  - Preset protocols and therapeutic encyclopaedia
  - Ergonomic applicators with audiovisual contact control
  - Tissue selectivity with capacitive and resistive mode
  - Continuous and pulsed therapy options
  - Dynamic Impedance Control™
  - Trolley\*
- 

\*optional



**Capacitive applicator**  
Ergonomic applicator  
with audiovisual contact control



**Resistive applicator**  
Ergonomic applicator  
with audiovisual contact control



**Touch operation**  
Intuitive operation with  
colour touch screen (8.4")

# BTL-6000

## TR-THERAPY PRO

### BTL-6000 TR-THERAPY PRO

---

- 150 W power
  - 5.7" colour touch screen
- 

### FEATURES & BENEFITS

---

- Preset protocols and therapeutic encyclopaedia
  - Tissue selectivity with capacitive and resistive mode
  - Continuous and pulsed therapy options
  - Dynamic Impedance Control™
  - Trolley\*
- 

\*optional



**Patient cable**  
For capacitive  
electrode



**Patient cable**  
For resistive  
electrode



**Touch operation**  
Intuitive operation with  
colour touch screen (5.7")

# SUPERIOR APPLICATOR TECHNOLOGY

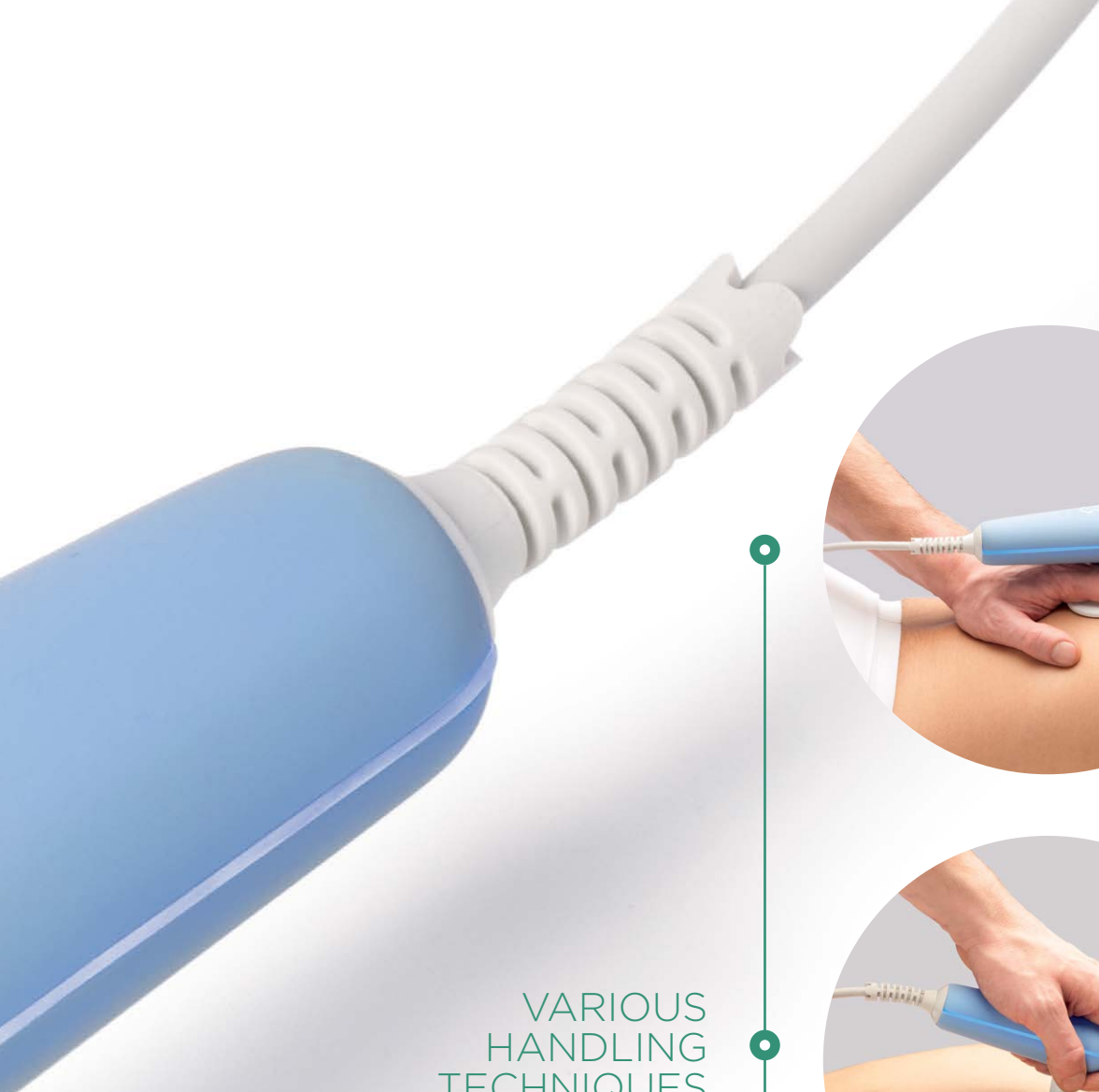
The core of the Targeted Radiofrequency Therapy system lies in its ergonomically designed applicator with the latest functional features. The applicator allows various types of grip for different application techniques, while the applicator's surface is made of soft and dirt-resistant material for comfortable and pleasant use. Other special features, such as audiovisual contact control and plastic insulation of the electrodes continuously make the therapist's work more effective and safe.

●  
ENHANCED  
OPERATOR  
SAFETY

●  
AUDIOVISUAL  
CONTACT  
CONTROL

●  
EXCEPTIONAL  
TISSUE  
SELECTIVITY





VARIOUS  
HANDLING  
TECHNIQUES







# DIFFERENT CONCEPT FOR YOUR THERAPY

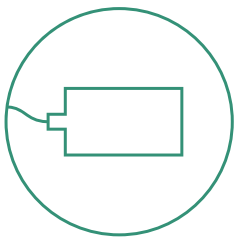


# STEP-BY-STEP THERAPY



## LOCATE THE DISORDER

Use appropriate diagnostic methods to locate the area to be treated.



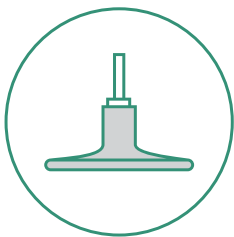
## PLACE THE NEUTRAL ELECTRODE

Place the electrode in close proximity to the treated area.



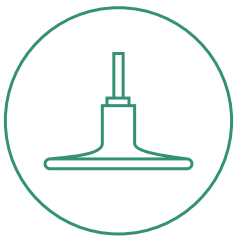
## APPLY THE CONDUCTIVE CREAM

Use an adequate amount of cream at the treated segment.



## USE CAPACITIVE MODE

For the first phase of the treatment, use the capacitive electrode. The capacitive electrode targets the superficial muscle tissue.



## USE RESISTIVE MODE

For the second phase of the treatment, use the resistive electrode. The resistive electrode selectively affects muscular and fibrous insertions located deeper within the tissue.

# MOST COMMON APPLICATIONS



Cervical pain



Impingement syndrome



Frozen shoulder



Low back pain



Triceps regeneration



Quadriceps relaxation



Metatarsalgia



Myalgia

# TR-THERAPY CONCEPT

The Targeted Radiofrequency Therapy delivers a new concept, allowing for effective combination of the therapist's unique skills with physical modality. The effect of the therapy is significantly improved through this simultaneous action and the therapy brings instant and long-lasting results.

## ① TR-THERAPY MASSAGE TECHNIQUE

The Targeted Radiofrequency Therapy, in combination with soft tissue techniques, enhances the therapeutic effect by increasing the blood perfusion and the nutrient, oxygen and defence-agent supply of the treated tissue. The combination, used for reflexively caused muscular hypertonus, leads to its faster and easier removal.

## ② TR-THERAPY PASSIVE MOTION TECHNIQUE

The Targeted Radiofrequency Therapy helps relieve trigger points and muscle spasms that prevent regaining the full range of joint movement. For example use of the Targeted Radiofrequency Therapy in combination with passive stretching of the shortened structures leads to their relief and immediately broadens the range of motion in the given segment.

## ③ TR-THERAPY MUSCLE ACTIVATION TECHNIQUE

Combining the Targeted Radiofrequency Therapy and isometric or isotonic muscle contraction focuses the hyperthermy into the contracted muscle. Delivered radiofrequency energy facilitates these fibers and leads to their incorporation in the performed muscle stereotypes.

①



②



③



# TECHNICAL PARAMETERS

## TECHNICAL SPECIFICATIONS OF THE BTL-6000 TR-THERAPY

MODEL	BTL-6000 TR-THERAPY ELITE	BTL-6000 TR-THERAPY PRO
Display	8.4" colour touch screen	5.7" colour touch screen
QUICK protocols	•	
Body Parts navigation	•	
Preset protocols	30	30
User therapeutic protocols	•	•
Patient database	•	•
Maximum power	320 W	150 W
Operating frequency	500 kHz	500 kHz
Operating mode	continuous / pulsed	continuous / pulsed
Outputs	For capacitive / resistive / neutral electrode	For capacitive / resistive / neutral electrode
Capacitive electrodes	4 sizes (20, 30, 50, 70 mm)	4 sizes (20, 30, 50, 70 mm)
Resistive electrodes	4 sizes (20, 30, 50, 70 mm)	4 sizes (20, 30, 50, 70 mm)
Neutral electrode	metallic (160 × 240 mm)	metallic (160 × 240 mm)
Dimensions	320 × 190 × 280 mm	320 × 190 × 280 mm
Weight	5 kg	5 kg
Mains supply	100-240 V, 50-60 Hz	100-240 V, 50-60 Hz
Standard accessories	capacitive applicator, resistive applicator, 4 capacitive electrodes, 4 resistive electrodes, 1 neutral electrode, cream II	patient cable for capacitive electrode, patient cable for resistive electrode, 4 capacitive electrodes, 4 resistive electrodes, 1 neutral electrode, cream II

### Optional accessories

Part number P6000.211	Trolley	Part number P6000.210	Transportation case
Part number P6000.521	Adhesive neutral electrode	Part number P6000.520	Tecartherapy cream



BTL-6000 TR-Therapy Elite



